



Features:

- TTL-Compatible Driver
- Broad Operating Bandwidth
- Rugged Construction.
- Customization Is Available

Specifications

Electrical Specifications, TA = +25° C

Parameters	Min.	Typ.	Max.	Units
Frequency Range	1MHz		4.5GHz	
Insertion Loss			2.6	dB
VSWR			2	
Isolation	80			dB
Switching Speed			500	nsec
CW RF Power, Operating			30	dBm
Material		Aluminum		
Finish		Gold Plating		
Input /Output Connector		SMA-Female / SMA-Female (Removable)		

※ Switching speed is defined as 50% TTL to 90% RF (t-on) and 50% TTL to 10% RF (t-off).

Environmental Specifications

DC Bias: +5 V±0.5 V @ 100 mA max

-5 V±0.5 V @ 50 mA max

Operational Temperature (°C)	-45 ~ +85
Storage Temperature (°C)	-55 ~ +125
Vibration	25g rms (15 degree 2KHz)
Humidity	100% RH at 35c, 95%RH at 40 deg c
Shock	20G for 11msc

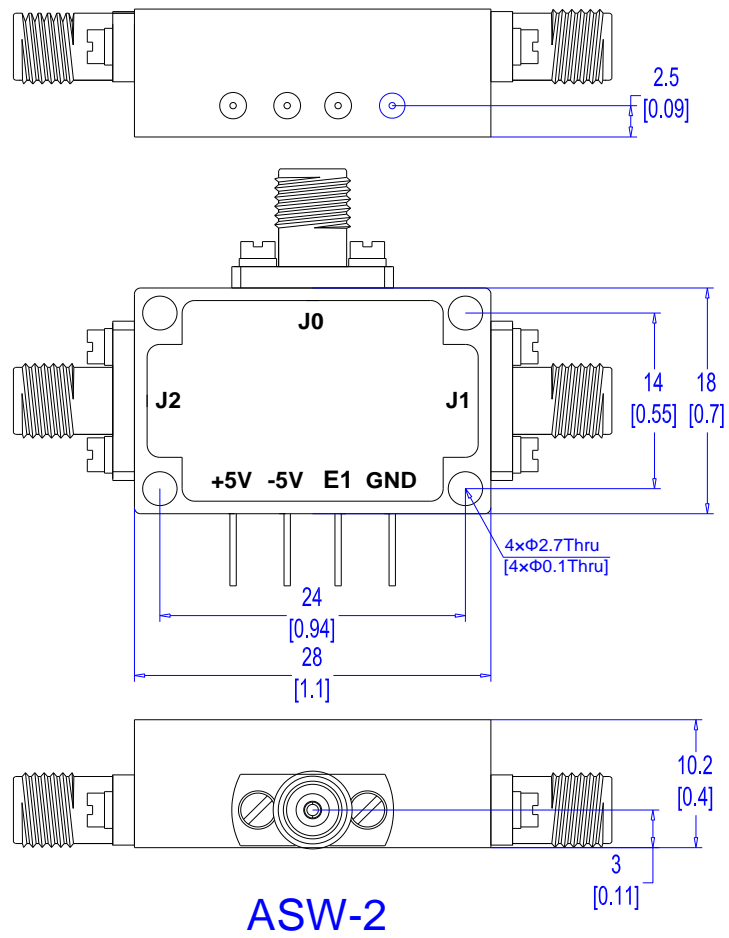
Absolute Maximum Ratings	
Biasing	+5 V , -5V
TTL Control Voltage	+5V/0V
Input RF power	+30dBm
Storage Temperature (°C)	-55 ~ +125

The information contained in this document is accurate to the best of our knowledge and representative of the part described herein. It may be necessary to make modifications to the part and/or the documentation of the part, in order to implement improvements. Amwav reserves the right to make such changes as required. Unless otherwise stated, all specifications are nominal.

Truth Table

Control Input TTL	Signal Path State
E1	
0	J0-J1
1	J0-J2

Outline Drawing:



Dimensions are in MM [inches].

Unless otherwise specified, Outline drawing +/-0.1mm; Hole +/-0.1mm.



AMWAV Technology, Ltd.

Website: www.amwav.com

E-mail: sales@amwav.com

Tel/Fax: +86 02887492975

TITLE

AWSPDTA-1M-4.5GA

Notes:

ALL SPECIFICATIONS ARE SUBJECT TO CHANGE WITHOUT NOTICE AT ANY TIME

Scale
1/1

DWG No.

REV
A