



## Band Pass Filter

AWBPF-6.8-6.95GA

Your RF & Microwave Components Source

### Features:

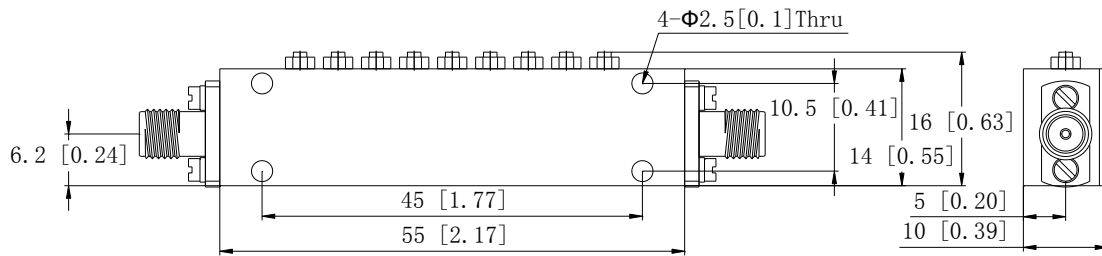
- High Rejection
- Low Insertion Loss
- Excellent Temperature Stability
- Small Size
- Customization is available

### Specifications

Parameters	Min.	Typ.	Max.	Units
Frequency range	6.8		6.95	GHz
Insertion Loss			0.8	dB
Ripple in Pass band			±0.3	
VSWR			1.3	
Rejection @ DC-6.1GHz	60			dB
@ 7.5GHz	60			
Group Delay			10	ns
Power Handling			5	W
Operating Temperature	-45		+85	°C
Impedance		50		Ohms
Input / Output Connector	SMA-Female (Removable, $\phi$ 0.5mm Pins inside)			
Finish	Black Paint or Silver Plated			

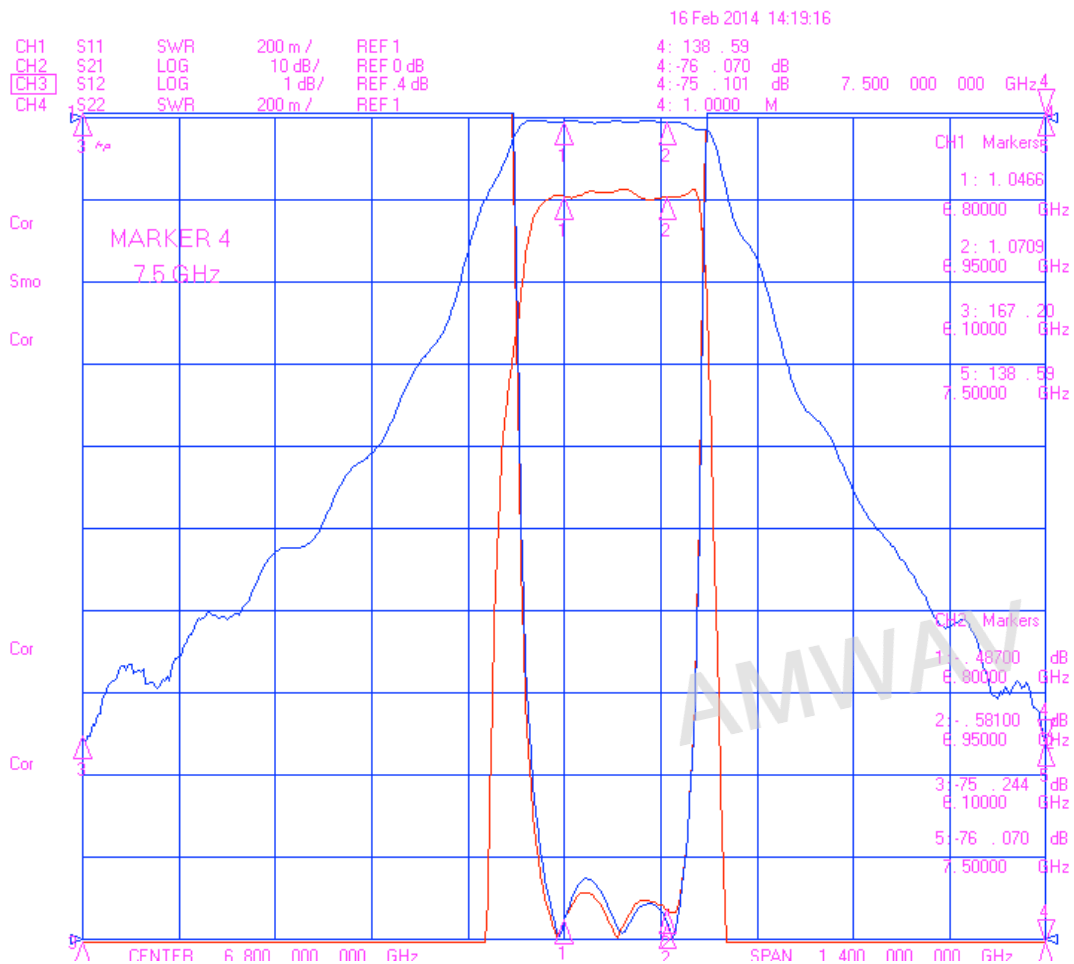
The information contained in this document is accurate to the best of our knowledge and representative of the part described herein. It may be necessary to make modifications to the part and/or the documentation of the part, in order to implement improvements. Amwav reserves the right to make such changes as required. Unless otherwise stated, all specifications are nominal.

# Outline Drawing:



1. Dimensions are in mm [Inches]
2. Tolerances: Outline drawing:  $\pm 0.2$  [0.008]  
Hole:  $\pm 0.2$  [0.008]

# Test Curve:



**AMWAV Technology, Ltd.**  
 Website: [www.amwav.com](http://www.amwav.com)  
 E-mail: [sales@amwav.com](mailto:sales@amwav.com)  
 Tel: +86 02887492975

**Part No.**

**AWBPF-6.8-6.95GA**

**Note:**

All SPECIFICATIONS ARE SUBJECT TO CHANGE  
 WITHOUT NOTICE AT ANY TIME

Scale  
 1:1

DWG No.

REV  
 A