



Band Pass Filter

AWBPF-11.4-13.4GA

Your RF & Microwave Components Source

Features:

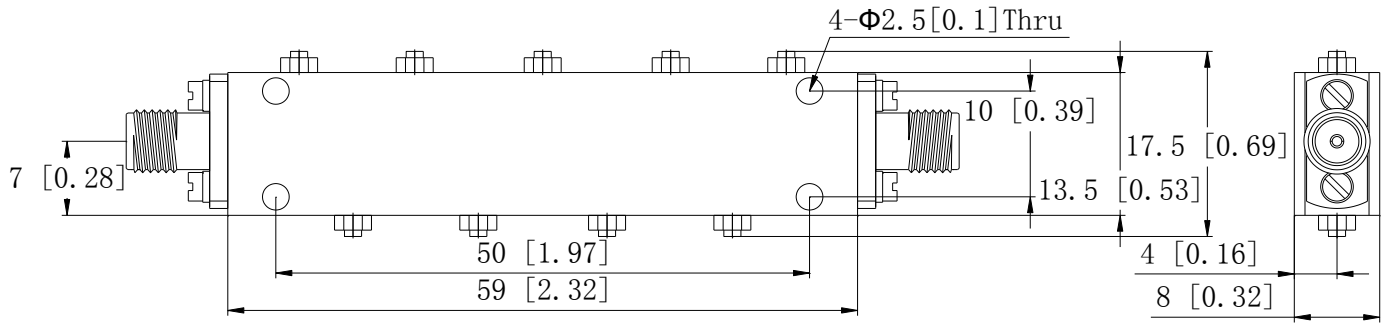
- High Rejection
- Low Insertion Loss
- Excellent Temperature Stability
- Small Size
- Customization is available

Specifications

| Parameters | Min. | Typ. | Max. | Units |
|--------------------------|--|------|------|-------|
| Frequency range | 11.4 | | 13.4 | GHz |
| Insertion Loss | | | 0.6 | dB |
| Ripple in Pass band | | | ±0.3 | |
| VSWR | | | 1.5 | |
| Rejection @ DC-10.4GHz | 60 | | | dB |
| @ 14.5GHz | 60 | | | |
| Group Delay | | | 5 | ns |
| Power Handling | | | 5 | W |
| Operating Temperature | -35 | | +65 | °C |
| Impedance | | 50 | | Ohms |
| Input / Output Connector | SMA-Female (Removable, ϕ 0.5mm Pins inside) | | | |
| Finish | Black Paint or Silver Plated | | | |

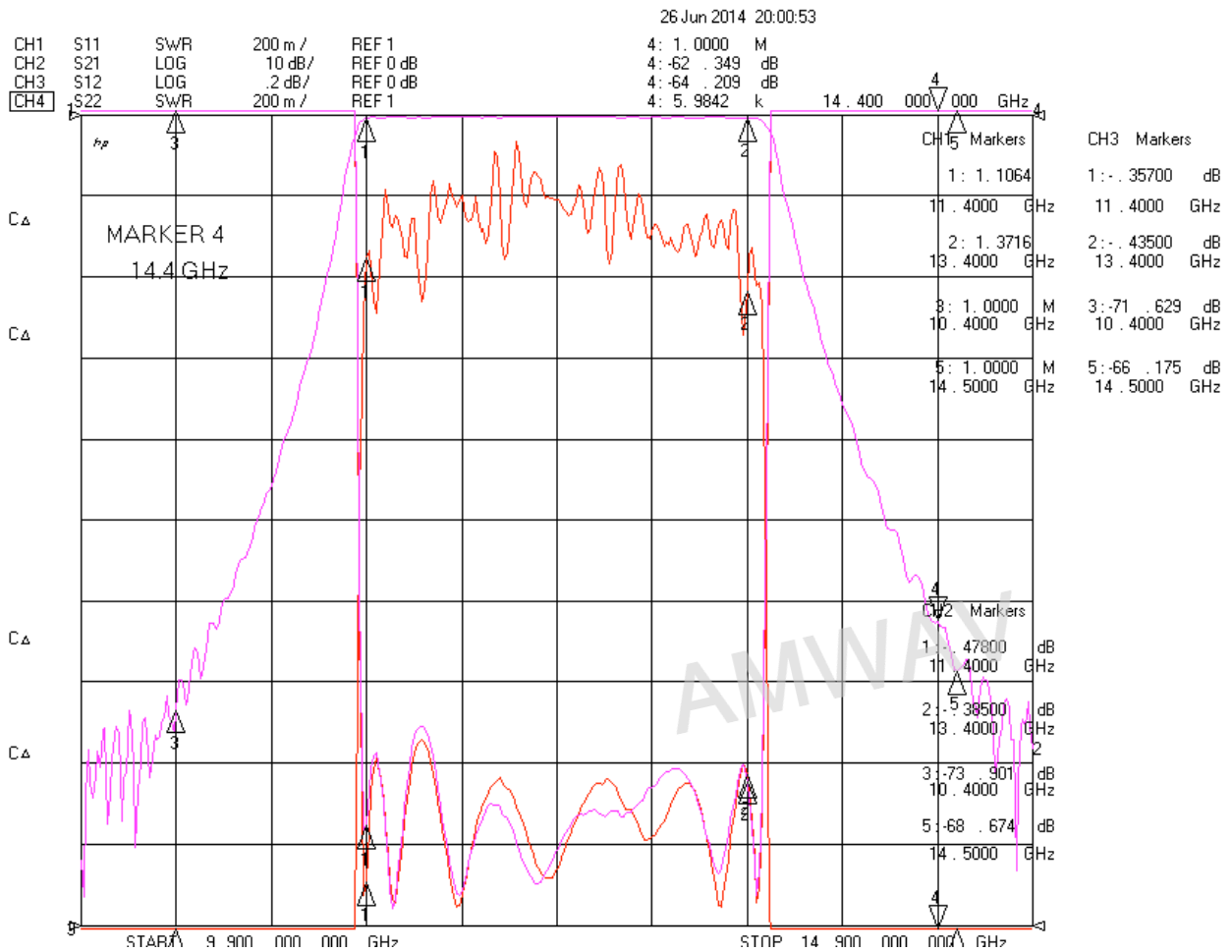
The information contained in this document is accurate to the best of our knowledge and representative of the part described herein. It may be necessary to make modifications to the part and/or the documentation of the part, in order to implement improvements. Amwav reserves the right to make such changes as required. Unless otherwise stated, all specifications are nominal.

Outline Drawing:



1. Dimensions are in mm [Inches]
2. Tolerances: Outline drawing: ± 0.2 [0.008]
Hole: ± 0.2 [0.008]

Test Curve:



AMWAV Technology, Ltd.
 Website: www.amwav.com
 E-mail: sales@amwav.com
 Tel: +86 02887492975

Part No.

AWBPF-11.4-13.4GA

Note:

ALL SPECIFICATIONS ARE SUBJECT TO CHANGE
 WITHOUT NOTICE AT ANY TIME

Scale
 1:1

DWG No.

REV
 A